

97 Hitchen Hatch Lane, Sevenoaks

Gross internal area (approx.)

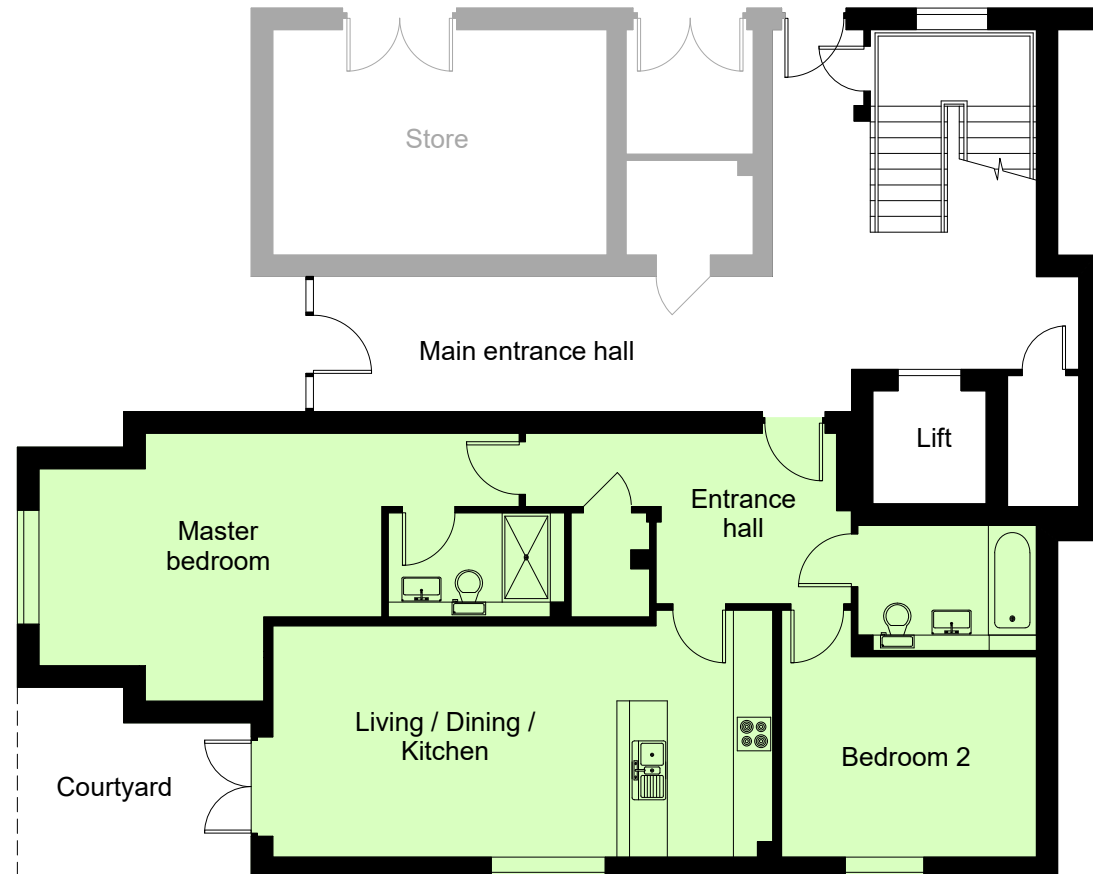
Plot 1 - 91.1 sq m (980 sq ft)

For identification only - Not to scale

© Trueplan (UK) Limited



Plot 1
Courtyard - 10m²



Lower ground floor

97 Hitchen Hatch Lane, Sevenoaks

Gross internal area (approx.)

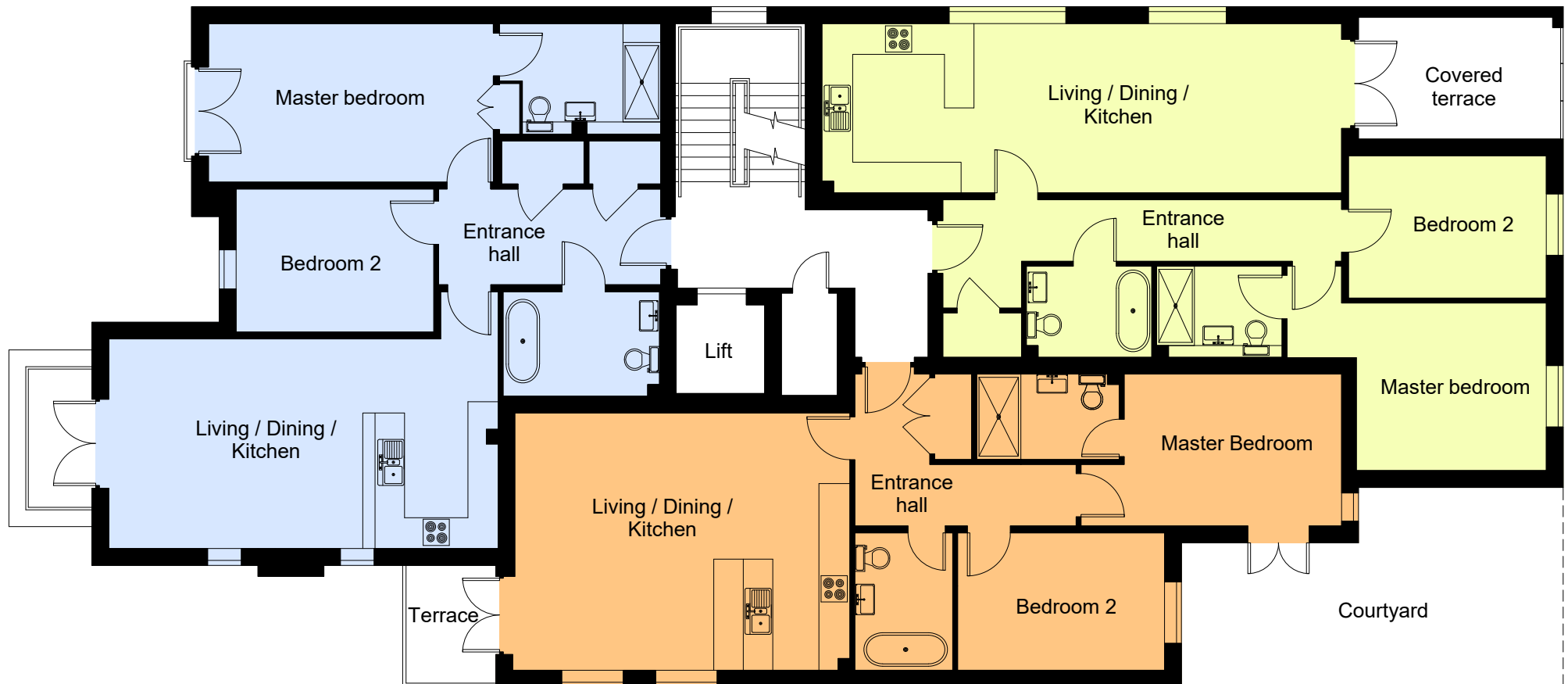
- Plot 2 - 95.3 sq m (1025 sq ft)
- Plot 3 - 89.8 sq m (966 sq ft)
- Plot 4 - 85.6 sq m (921 sq ft)

For identification only - Not to scale

© Trueplan (UK) Limited



- Plot 2 terrace - 35m²
- Plot 3 terrace - 10m²
- Plot 4 courtyard - 27m²
- Plot 4 terrace - 4m²



Upper ground floor

97 Hitchen Hatch Lane, Sevenoaks

Gross internal area (approx.)

- Plot 5 - 95.3 sq m (1025 sq ft)
- Plot 6 - 89.8 sq m (966 sq ft)
- Plot 7 - 85.6 sq m (921 sq ft)

For identification only - Not to scale

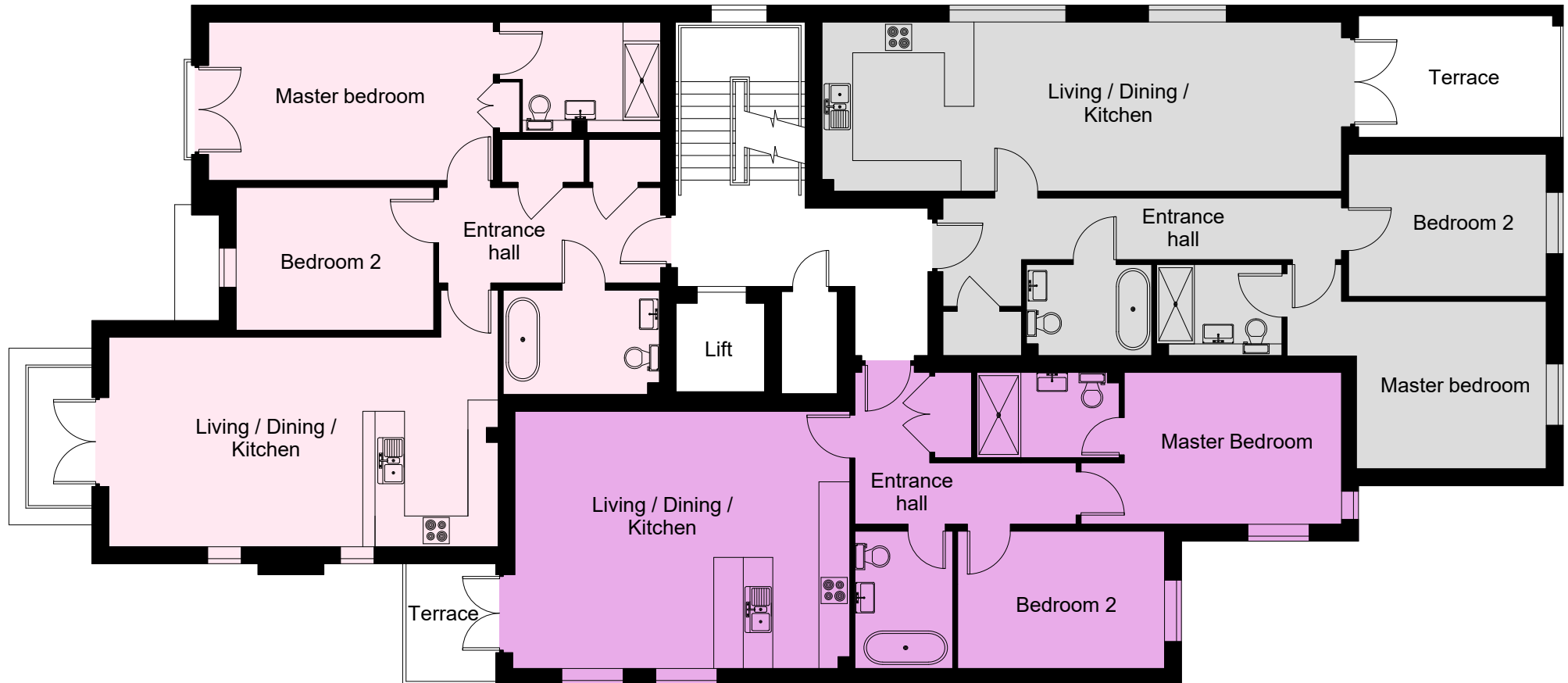
© Trueplan (UK) Limited



Plot 5 terrace - 3.5m²

Plot 6 terrace - 10m²

Plot 7 terrace - 4m²



First floor

97 Hitchen Hatch Lane, Sevenoaks

Gross internal area (approx.)

Plot 8 - 123.3 sq m (1324 sq ft)

For identification only - Not to scale

© Trueplan (UK) Limited



Plot 8

Master terrace - 7m²

Bed 2 terrace - 5m²

Walk out rear garden terrace - 70m²

Eaves cupboard storage - 24m²

----- Restricted height



97 Hitchen Hatch Lane, Sevenoaks

Gross internal area (approx.)

■ Plot 9 - 75.0 sq m (807 sq ft)

For identification only - Not to scale



Plot 9

Paved area - 45m²

Grassed area - 125m²

Total outside area - 170m²

